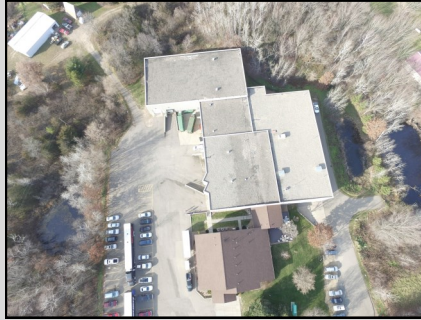




St. Croix County — Office-Warehouse



**454 County Road VV
Somerset, WI**

- Office-Warehouse on 8.26 acres
 - 53,931 SF
 - 98 parking spaces
 - Zoned General Commercial
- [Dan Hebert](#): (651) 255-5558

Polk County — Warehouse



**200 Unity Avenue
Centuria, WI**

- 17,424 SF; 4.44 acres
 - 20 ft. clear height; 72 ft. clear span
 - Two drive-in doors
 - Paved road, city water/sewer in street
- [Leslie Racine](#): (612) 961-4010

Pierce County — Main Street Business & Warehouse



**Wabash Street
Bay City, WI**

- 10,174 SF heated
 - 2,880 SF unheated
 - Main Street Business Location
 - Adjacent Warehouse Facility
- (651) 764-4432

Dunn County — Industrial



**E5484 Highway BB
Cedar Falls, WI**

- 13,568 SF
 - 16 ft. clear ceiling height
 - Four industrial-use buildings
 - Two vacant lots also for sale
- [Rich Ellefson](#): (715) 235-8001

Contacts

Dunn County EDC

Eric Turner

eric.turner@dunedc.com

(715) 232-4009

Pierce County EDC

Paul Schwebach

paul@pcedc.com

(715) 425-3881

Polk County EDC

Steve Healy

steve.healy@polkcountyedc.com

(715) 646-3369

St. Croix EDC

Bill Rubin

bill@stcroixedc.com

(715) 381-4383

FEATURED PROPERTY: Polk County — Industrial



250 Unity Street Centuria, WI

- 28,080 SF; 9.01 acres
- 72 ft. & 90 ft. clear span in warehouse
- 1,000 sq. ft. office area available
- Possible SBA financing

[Lee Racine](tel:(612)961-4010): (612) 961-4010

FEATURED PROPERTY: Dunn County — Virtual Spec Building



Menomonie, WI

- 31,040 SF; 6+ acres
- State plans & site plans permitted to build
- Utilities and broadband at “curbside”
- Pre-engineered construction
- www.dunnedc.com/dunn/menomonie-spec-building

[Eric Turner](tel:(715)232-4009): (715) 232-4009

The Greater St. Croix Valley Economic Development Collaborative is a partnership between the St. Croix, Pierce, Polk and Dunn County EDCs focusing on mutual shared outreach, activities and advocacy in western Wisconsin.



Ongoing support provided by  Xcel Energy®