



## Dunn County — Stout Technology & Business Park



Technology Dr. & Schneider Ave.  
Menomonie, WI

- 200+ acres for new development
- T-1 Technology Park Specialized
- Multiple broadband options
- Gold shovel ready sites

[Jamie Radabaugh](#): (715) 832-8707

## Pierce County — Warehouse



W7605 Hwy. 35  
Hager City, WI

- Two locations for lease
  - 125'x208 heated with office
  - 100'x260' dry storage
  - Both available Aug. 1, 2016
- Bill Schroeder: (715) 792-2020

## St. Croix County — Restaurant, Bar, Brewhouse



230 S. Knowles Ave.  
New Richmond, WI

- 13,000 SF, excellent condition
- Fully remodeled in 2010
- Three floors, two kitchens
- Banquet & meeting facilities

[Tropher Lee](#): (715) 295-4121

## Polk County — Manufacturing/Industrial



911 Pine Street  
St. Croix Falls, WI

- 60,000 SF
- For sublease through Dec. 2018
- Excellent loading, good clear height
- Very heavy electrical

[Eric Dueholm](#): (651) 621-2550

### Contacts

#### Dunn County EDC

Eric Turner

[eric.turner@dunedc.com](mailto:eric.turner@dunedc.com)

(715) 232-4009

#### Pierce County EDC

Paul Schwebach

[paul@pcedc.com](mailto:paul@pcedc.com)

(715) 425-3881

#### Polk County EDC

Steve Healy

[steve.healy@polkcountyedc.com](mailto:steve.healy@polkcountyedc.com)

(715) 646-3369

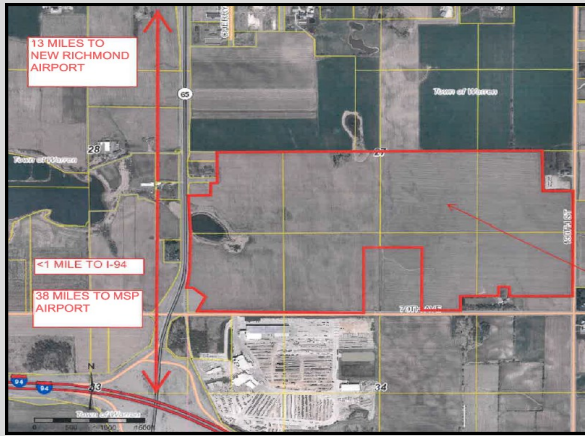
#### St. Croix EDC

Bill Rubin

[bill@stcroixedc.com](mailto:bill@stcroixedc.com)

(715) 381-4383

**FEATURED PROPERTY: St. Croix County — Office/Distribution/Warehouse/Light Mfg.**



**Roberts Business Park**

- “Gold Shovel Ready” site available for immediate subdivision and development
- 276 acres; superb access to I-94 corridor
- Approximately half M-3 (Industrial) and half B-3 (Business) - both negotiable

[Gerald Norton](mailto:Gerald.Norton@xcelenergy.com): (952) 831-1993

**FEATURED PROPERTY: Dunn County — Manufacturing/Industrial**



**Menomonie, WI**

- 13.23 acres for development
- 70 minutes from MSP airport
- I-94 and rail access
- Fantastic location for logistical hub

[Eric Turner](mailto:Eric.Turner@xcelenergy.com): (715) 232-4009

**The Greater St. Croix Valley Economic Development Collaborative is a partnership between the St. Croix, Pierce, Polk and Dunn County EDCs focusing on mutual shared outreach, activities and advocacy in western Wisconsin.**



*Ongoing support provided by Xcel Energy*